



Message from the President



Dear Division 15 Members,

The 2013 APA Convention is just around the corner. We have four exciting days of events planned, including presentations from members who earned our Division's prestigious Pintrich, Snow, and Thorndike Awards. In addition to our award recipients, Robert Slavin will present a keynote address on the role of educational psychology in federal policy. Details of these events are included in the pages that follow and on the [Division 15 website](#). If you are attending APA this year, please come support your colleagues for these events! For those unable to attend, Division 15 will be sharing a number of online resources both during and after the event – including video of all featured addresses, live-tweeting of sessions, and reflections from doctoral students attending the event.

As President of Division 15, it has been an extremely busy, productive, and exciting year. I leave the position with special gratitude for the dedication of committee chairs and members who volunteer their valuable time to support our organization. As a result of their efforts, proposal submissions for this year's conference were up 61% and our membership has grown more than 30% (with over 1600 members, we are at a five-year high!). What's more, we now have one of the largest social followings among all APA Divisions and our diverse selection of web assets is reaching an ever-expanding audience. Plans are underway for a Division 15 conference in fall of 2014. This conference will not replace the APA conference; instead, it will provide additional opportunities for collaboration and discussion of important topics in educational psychology. To the committee chairs and members who made these results possible: thank you! A special thanks as well to the 2013 Program Chairs (Jeffrey Greene and Matthew Irvin) for a superb convention program, and to our Director of Communications, Wade George.

A warm welcome to incoming President Theresa Thorkildsen and Executive Committee members Karen Harris (President-Elect), Michele Gill (Treasurer), Heather Davis (Member-at-Large), and Timothy Curby (Representative to the APA Counsel). We will miss the counsel and advice of Marty Carr, Sandra Graham, Sharon Nichols, and Tim Urdan as their three-year terms on the Executive Committee come to an end.

I am honored to have served as the President of Division 15 from 2012-2013, and I look forward to seeing members at future APA meetings.

Mahalo,

Judith Meece
President, APA Division 15, 2012-2013

Inside This Issue

- 1 Message from President
- 2 Exec. Committee Highlights
- 2 Committee Report Highlights
- 3 Annual Meeting Highlights
- 4 Meet Terri Thorkildsen
- 5 Incoming Executive Committee Officers
- 6 Interview with Bill Asher
- 7 *Classroom Insights* Release
- 8 Executive Committee Retreat Minutes
- 12 Committee Reports

"We now have one of the largest social followings among all APA Divisions and our diverse selection of web assets is reaching an ever-expanding audience."

EXECUTIVE COMMITTEE RETREAT HIGHLIGHTS*

Monday, April 29, 2013

- ✿ Approved to fund only three Early Career Awards rather than five
- ✿ Voted to decrease number of participants in Graduate Student Seminar and increase the stipend for Hawai'i
- ✿ Approved change to P&P Manual to allow for solely electronic distribution of NEP 15
- ✿ Met with TIAA-CREF officials who suggested that the Division develop a spending priority plan

**A full set of the approved retreat minutes can be found at the end of the newsletter*

COMMITTEE REPORT HIGHLIGHTS

Membership Committee

- ✿ Membership up 30% since last year; Division 15 has 1,610 members—a 5 year high

Graduate Student Affairs Committee

- ✿ Selected eight participants for this year's Graduate Student Seminar
- ✿ APAGS Representatives conducted an information-gathering survey with Division 15 graduate students

Fellows Committee

- ✿ Unanimously voted to extend Division 15 Fellow status to three Fellows of other APA Divisions: Charles Greenwood (University of Kansas), Todd Little (University of Kansas), and Darcia Narvaez (University of Notre Dame)
- ✿ Unanimously approved four Division 15 members seeking initial Fellow status

Nominations Committee

- ✿ Incoming officers have been selected (See pg. 5 to read bios)

Division 15 Conference

- ✿ In the process of selecting a specific date in October of 2014, with Ann Arbor, Michigan and Chapel Hill, North Carolina as potential sites

Richard E. Snow Award Committee

- ✿ Dr. Kou Murayama is the 2014 Snow Award recipient

Dissertation Awards Committee

- ✿ Winners: Loren Marulis (University of Michigan) and Ninger Zhou (Purdue University)

Program Committee

- ✿ Arrangements for catering, rooms, and videotaping have been made for Division sessions at APA

APA ANNUAL MEETING HIGHLIGHTS

What Not to Miss

Honolulu, Hawai'i, July 31-Aug. 4, 2013



Division 15 has been hard at work throughout the year preparing for our 2013 conference theme: "Speaking Research to Power." Our dedicated Program Co-Chairs (Drs. Matt Irvin and Jeff Greene) have assembled a diverse assortment of high-impact sessions, and various other Division 15 committees have arranged to sponsor a number of enjoyable and informative events. For a printable version of Division 15's complete program, please visit [here](#).

Dr. Robert Slavin's Keynote Address

Dr. Slavin's keynote address, titled *Evidence-Based Reform in Education*, is grounded in the notion that educational policy is increasing its focus on programs with strong evidence of effectiveness, including initiatives such as Investing in Innovation (i3). In his presentation, Dr. Slavin will give a rationale for evidence-based reform; trace the history, current status, and potential of the movement; and describe how educational psychologists can play a decisive role in it. Division 15's official press release for the address may be found [here](#). The speech will be held on Friday, August 2 from 12:00-12:50 p.m. in the Convention Center, Room 317B.

E.L. Thorndike Career Achievement Award Address - Dr. Keith Stanovich

Division 15 is proud to announce Dr. Keith Stanovich as its 2012 E.L. Thorndike Career Achievement Award winner. Dr. Stanovich will accept his award and address Division 15 on Friday, August 2 from 1:00-1:50 p.m. in the Convention Center, Room 317B. All are encouraged to attend and honor Dr. Stanovich for his illustrious career and dedication to our science.

Early Career Psychologist Luncheon

Division 15 will host a mentoring luncheon at Hiroshi's from 12:00-2:00 p.m. on Wednesday, July 31. The event will provide an opportunity to learn about grants and grant writing at the federal, state, and private levels.

Small Research Award Round Table

Dr. Paul Schutz, past Division 15 President, will host a two-hour research roundtable. This session will feature five recent early career members who received Division 15 small research awards. The roundtable will be held on Thursday, August 1 from 9:00-10:50 a.m. in the Convention Center, Room 319A.

Doctoral Student Events

The Co-Chairs of our Graduate Student Affairs Committee (Mike Yough and Ellen Usher) have prepared a program of sessions specifically geared toward our doctoral student population. This program may be found [here](#).

For more information on Division 15's work at the 2013 APA Convention, please contact [Wade George](#), Director of Communication



GETTING TO KNOW OUR INCOMING PRESIDENT Dr. Terri Thorkildsen

Dr. Terri Thorkildsen – affectionately called “T2” by friends and colleagues – is a Professor of Education and Psychology at the University of Illinois at Chicago. Previously, she taught at University of Washington, University of Wisconsin-Milwaukee, and Purdue University, and earned degrees at Purdue University and University of Washington (with additional undergraduate studies at Michigan State University). Dr. Thorkildsen is a fellow of both Division 15 and the American Educational Research Association (AERA).

For her upcoming tenure as President, Dr. Thorkildsen has noted a theme of *Achieving More with Others*:

We in Division 15 are committed to educational questions about learning and development in multicultural and increasingly interdependent arenas – contexts defined by both escalating expectations and social inequalities. Additionally, developing our organization’s financial planning will ensure longevity in our ability to address such significant educational dilemmas.

When asked about her draw to Division 15, Dr. Thorkildsen responded that, despite membership in an array of professional organizations (and a positioning at the crossroads of developmental and educational psychology), Division 15 is the one place in the broader research community that actively respects and endorses multiple perspectives when researchers formulate criteria for good research:

Those of us who are active in the division seek to invent a shared understanding of the topics we study so that we can include – rather than distance – non-researchers who also benefit from knowledge about motivation, learning, classroom management, and assessment.

Dr. Thorkildsen will assume office immediately following the 2013 APA Convention in Honolulu, Hawai’i. For additional information regarding her background and current work, please visit Dr. Thorkildsen’s personal site [here](#).

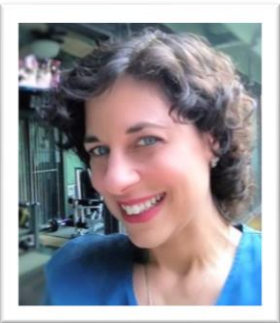
Are you or someone you know interested in becoming a Division 15 Fellow? Please contact Dr. Terri Thorkildsen at thork@uic.edu



INCOMING EXECUTIVE COMMITTEE OFFICERS



Karen R. Harris, President-Elect. Karen Harris is the Warner Professor of Education in the Division of Educational Leadership and Innovation, Arizona State University. She has taught kindergarten, fourth grade, and special education students. Her research focuses on theoretically based interventions for the development of academic and self-regulation abilities among normally achieving students, students who are at-risk, and those with disabilities, as well as effective models of in-service professional development for writing instruction for all students. Former editor of the *Journal of Educational Psychology*, Dr. Harris is senior editor of the 2012 American Psychological Association's *Educational Psychology Handbook*. She looks forward to serving Division 15 and the field of educational psychology.



Michele Gregoire Gill, Treasurer. Michele Gill is an associate professor of educational psychology at the University of Central Florida. Her research interests center on conceptual change, teacher beliefs, and educational reform. She recently founded and serves as school board chairperson for an elementary charter school grounded in a Vygotskian pedagogical model. Dr. Gill is co-founder of the innovative Applied Learning and Instruction Master's degree program at UCF, and is the program coordinator for the educational psychology specialization in UCF's College of Education Ed.D program. In 2011, she served as Program Co-Chair for Division 15's annual meeting.

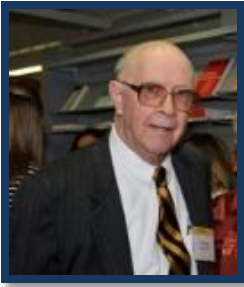


Timothy W. Curby, Representative to APA Council. Timothy Curby is an assistant professor of applied developmental psychology at George Mason University. He received his PhD in educational psychology from the Curry School of Education at the University of Virginia. His work focuses on children's classroom experiences and applying advanced statistical models to school-based research. Specifically, he focuses on the interactions that teachers have with children as a mechanism for children's development. Dr. Curby is also interested in measurement of classrooms and development of observational measures of the classroom environment. More information about his work is available on the Development In School Contexts (DISC) lab

website (disc.gmu.edu).



Heather Davis, Member-at-Large. Heather Davis joined APA Division 15 in 1997 as a graduate student and benefited from the programs the Division created to support doctoral research. As a new faculty member, she had the opportunity to serve as Co-Chair for the Doctoral Student Seminar (2001-2003) and the Dissertation Awards Committee (2004-2006). From 2008-2011, Dr. Davis served as Secretary for the Division and facilitated the development of the Early Career Committee, Early Career Research Grant, and the Division's website. Dr. Davis is deeply committed to helping the Division increase its impact on teaching and policy and is honored to serve as Member-at-Large.



HISTORICAL PERSPECTIVE

Bill Asher

Division 15 President 1988-89

Discuss how you came to be the President of Division 15. Why did you agree? What other issues did you have to consider before agreeing to be President?

There were a lot of issues, but when they asked me, I said, "yes, because it is a major honor." When I ran the first time, I did not win, which is fairly typical. But, they were encouraging, and I think they waited a year or so and they asked me again. I said, "yes," again, and I won. I really think that, unlike some of our Division 15 Presidents who are just outstanding, brilliant scholars, and highly productive, I probably won because about five years before that they had a person who chaired the Fellows Committee who got no Fellows at all. So, the President asked me if I would chair the Fellows Committee, and I said, "yes." We got a large number of nominees. I did that for the three years. I was chair, and so we must have gotten about 25 or 30 Fellows over those years. When you have that many people becoming Fellows and that many people who are nominating them and making recommendations for them, you get to be known fairly widely.

From your perspective, what was the state of Division 15 before and during your presidency?

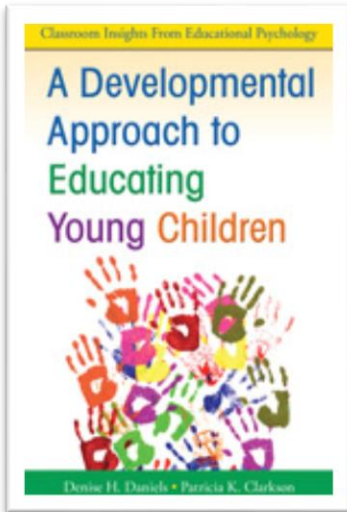
Well, Division 15 always had gotten along on a pretty minimal budget. As I recall it was \$1,300 or \$1,400 dollars per year, and the Executive Committee allocated it as best they could. So, nobody had a lot. Everybody tried to do things cheaply. About the time I became President-elect was the time that the Handbook of Educational Psychology was proposed. One of the first things I did was go to the two men who would be the co-editors and say, "I am going to give you every possible support I can during the three years that I am President-Elect, President, and Past-President." One of the things the co-editors did about the second year was say, "You know we may make some money on this thing. You had better start figuring out how you are going to spend it." It was totally unheard of and a relatively huge amount of money compared to what we had. So I think the Handbook of Educational Psychology was the big thing that – although I really did not have much to do with starting it – I certainly was there to help support it. We started to think about where we might start to use some of the money, and that resulted in other publications. So, what really has made the Division prominent in the last 20 years is all the books, pamphlets, and writings that have come out as a result. We finally had enough resources to take some chances and they have worked nicely.

Based on your experience as a researcher and President, what were the salient issues in Educational Psychology around that time?

As a research methodologist, the thing I noticed then and later as much as anything else, was meta-analysis. The physical and biological sciences have always been able to relate their results across studies and build more inclusive theories. The behavioral and social sciences were never really able to do this in any good way. Gene Glass, who is a Division 15 Member and Fellow, really developed the meta-analysis of experiments. (Industrial Psychologists developed the meta-analysis of correlational data.) It was Glass who developed meta-analysis in Education and Educational Psychology, and it was Larry Hedges (who was a Professor of Education at the University of Chicago) who put the very solid statistical foundations under it and has continued to help develop it. It was education faculty and educational psychologists who developed meta-analysis. I am proud of that. Meta-analysis as an underpinning development of theory throughout the behavior sciences and education was developed by people in educational psychology as their contribution to the research methodology in general in the behavioral and social sciences, and also in medicine.

A complete interview may be read [here](#)

NEW *Classroom Insights* RELEASE



Division 15's newest addition to the *Classroom Insights* series, edited by Debra K. Meyer and Lynley Anderman, is now in press. Authored by Lee Shumow and Jennifer A. Schmidt, *Enhancing Adolescents' Motivation for Science: Research-Based Strategies for Teaching Male and Female Students* integrates an extensive body of theory on motivation and gender with rigorous analyses of student experience and teacher practice. Chapters cover intrinsic motivation, value, affiliation, autonomy, competence, confidence, goal orientation, ability beliefs, challenge, and emotion. Resources on the companion website include handouts, assessments, and surveys for teachers to use; further reading and links to other projects; and streaming video clips exemplifying concepts and practices presented in the book.

For more information regarding this release, please contact Wade George.



The Executive Committee thanks members who completed the member services and activities survey. Results will be disseminated in the upcoming weeks.



APA Division 15: Educational Psychology

Executive Committee Meeting

Westin St. Francis, Second Level Victorian; San Francisco, CA

April 29, 2013; 8:00-9:30 p.m.

Submitted by: Helenrose Fives

Approved on: June 7, 2013 via online vote of approval by Graham, Thorkildsen, Kitsantas, Meece, Nichols, Cross, Urdan, Carr, & Fives.

Members present: Judith Meece, Terri Thorkildsen, Marty Carr, Sharon Nichols, Helenrose Fives, Anastasia Kitsantas, Sandra Graham, Dionne Cross, Tim Urdan

The Executive Committee meeting began at 8:00 p.m. following dinner with the committee chairs.

The initial item under discussion (presented by **Meece**) was to clarify the procedures for the Division 15 **Fellows Committee**. Meece provided a report on this issue and discussed the current status.

During this year's selection process, APA moved to an online system and deadlines from APA and our Division procedures did not fully match up. These issues seem to have been resolved by several changes, including a new chair, new APA system, and new processes. Clarification is that the Division President sends the names of non-Division 15 fellows who want to be fellows in Division 15, rather than the Fellows Committee; however, the Fellows Committee still vets these people. This will be reviewed again in the future.

The committees responsible for identifying Division 15 award recipients submitted names for the 2014 award cycle for the Executive Committee to approve. The Executive committee voted unanimously to approve **Dr. Kate Niehaus** for the **Paul Pintrich Dissertation Award** and **Dr. Kou Murayama** for the **Richard E. Snow Early Career Award**. The Executive Committee also approved the Thorndike Award Committee's nomination of **Sandra Graham** for the **E. L. Thorndike Award for Career Achievement in Educational Psychology** (Graham abstained from this vote).

The **Graduate Student Affairs** committee, co-chaired by Mike Yough and Ellen Usher, submitted a request to redistribute the \$12,000 budget for graduate student stipends for those attending the Graduate Student Seminar in Hawaii. The chairs requested permission to decrease the number of participants and increase the stipend amount. The Executive Committee voted to give the Co-Chairs the authority to distribute the \$12,000 in stipends equally among the graduate student participants this year.

A number of **online votes** were conducted by the Executive Committee since the last meeting in November. **Helenrose Fives** reviewed those votes with the Executive Committee so that they could be entered into these minutes:

- **March 27, 2013: Division C Matching Funds Request.** Request received from Division C for \$500 in matching funds to co-sponsor an Invited Session at AERA that will bring together four educators working with low-income students and four researchers; the group will discuss collaborative research projects. The four educators will discuss what they perceive to be some of the most pressing, researchable questions involving the education of low-income students. Following their lead, the researchers will discuss what research has been conducted to date on these issues and possible future research plans. The funds, if received, will support the four educators in the session by paying for their conference registration and offering them a small stipend for their time. Votes to approve: Meece, Carr, Thorkildsen, Nichols, Fives, Kisantas, Graham, Cross; Abstain: Urdan
- **February 27, 2013: Distribution of Division 15 Newsletter.** The Policy and Procedures Manual states that these Newsletters should be sent electronically and through regular mail; however, the Newsletter has not actually been mailed in some time. Further, neither the current Editor (Kelly Rodgers), current President (Meece) or Communications Director (George) have the capability of mailing out hard copies to over 1,000 members. Can we revise the Policy and Procedures Manual to reflect our current practice of distributing the newsletter online through LISTSERV and website? Votes to approve: Meece, Carr, Thorkildsen, Nichols, Fives, Kisantas, Graham, Cross, Urdan
- **January 28, 2013: Approve Minutes from January 24 Conference Call.** Approve: Carr, Thorkildsen, Nichols, Fives, Graham, Cross; Abstain: Urdan, Meece, Kisantas
- **December 6, 2012: Approve Minutes from November EC Retreat.** Votes to approve: Meece, Carr, Thorkildsen, Nichols, Fives, Kisantas, Graham, Cross, Urdan

Meece, for the Division, received a request to join **PsychExtra**. Wade George, Communications Director, prepared a report analyzing the option and recommended against our participation in the report for two key reasons: joining PsychExtra (1) would not add to our existing web presence, and (2) could serve to compete with our own efforts. Following a brief reflection on the report, the Executive Committee decided to support the plan to stay with our own sites as recommended by our Communications Director.

Meece requested input on continuation of the Ad Hoc Small Conference Committee. This committee was established to review proposals from members interested in putting on small conferences or workshops around focused ideas. Meece expressed her concerns, namely that we do not know the long-range financial plan for the Division yet; as such, to gear up for another round of competition when we do not know what our financial future looks like is imprudent. In addition, in 2014 we plan to host the Division 15 Conference, and we currently do not know what the cost of that will be. **Carr** shared that the new Division 15 Conference should be self-sufficient. There was some discussion that providing these small conference grants may be in conflict with the Division's goal to host the Division 15 Conference in 2014. **Cross** asked whether the underling concern leading to the disbanding of this committee is about the costs or a concern about duplication of ideas and conferences. **Cross** clarified that there is a difference between disbanding the committee versus holding the calls for funding in abeyance until we have a clear understanding of our spending

priorities. The Executive Committee recommended suspending the activities of the Ad Hoc Committee for the next year. Meece will follow up with Committee Chair.

Division 15's costs for activities at the **APA Conference 2013** in Hawai'i include paying for the Division social hour, the Executive Committee meeting with light refreshments, and the Graduate Student Affairs Committee activities (which will be increased – for this year only – to \$11,000). The EC approved the APA Conference budget.

Following the Executive Committee Retreat in November, three Executive Committee members (Sharon Nichols, Marty Carr, and Terri Thorkildsen) set up a meeting with representatives from TIAA-CREF to discuss the long-term potential for **Division 15 funds**. **Nichols** described the results of this meeting. Specifically, the Division was recommended to develop a spending priority perspective. Nichols reported that, this year (2013), we are estimated to spend more than we earn by almost \$40,000. We have several unknowns in our financial future, in particular the contract renewal with Taylor and Francis. Further, in the past year or two we have added some significant spending increases, namely: hiring a Communications Director and small conference grants. Nichols described two approaches to our next financial moves. One option is to create a small nest egg and continue spending each year within our existing yearly earnings. The second option is to become self-sufficient by becoming a quasi-endowment. The Division would need to save three million dollars in order to have a large enough endowment so that we could fund Division activities based on interest from that endowment. If the goal is to pursue the second option, there are many decisions that the Division then needs to consider.

The Executive Committee then moved into a discussion of these issues, raising questions such as: "Who should be making the decision (Executive Committee or membership at large)?" and "How should we move forward?" **Thorkildsen** clarified that the Policy and Procedures Manual recommends that the Division have in reserve two years of our annual costs at all times (the Division has more than this currently). **Thorkildsen** drafted a possible Spending Policy for the Division and shared as a potential means for facilitating the larger discussion of how we would like to spend. The Executive Committee agreed that this is a large issue that requires time and consideration, and that next steps for this discussion include decisions on how best to share this discussion with the membership; what to share at APA; and what do we want to do with the long-term plan.

Given the concerns with our budget this year and the uncertainty of the Taylor and Francis contract for *Educational Psychologist* (coming up for renewal), **Meece** asked if the Division still wanted to fund the five early career research grants (\$37,500) or should we pull back the spending and only allow three to be funded? Meece also noted that, for the past few award cycles, only three awards have been given. Meece moved to decrease the number of Early Career Research Grant Awards to three. Urdan, Carr, Meece, Graham, Nichols, Kisantas, and Thorkildsen voted in favor of the motion. Fives and Cross opposed the motion. The motion carried.

\$1,000 in travel funds for Treasure-Elect to attend APA is currently approved. However, the Executive Committee has already approved a \$1,200 budget for EC members (for this year only). The Executive Committee agreed that the incoming Treasurer should have also have \$1,200 for this year.

Meece reported that she received a request from APA about Division 15 providing support for international attendees at APA. Meece reported that we do not have anything in our By-Laws about international travel funds and asked the Executive Committee if we had any interest in supporting international members who will be presenting at APA in Hawai'i. The Executive Committee decided, given the tenuous nature of our current financial picture, not to incur any additional costs until we have a larger plan in place.

The EC discussed Andrew Elliot's questions regarding the Haiti Initiative, namely: whether the Division would be interested in adopting a "zone" in Haiti and if the Division is interested in developing an outreach committee to support other initiatives such as this? The EC has been handling requests for support on an ad hoc basis (e.g., SCIPIE support, AERA Division C teacher panel, and Haiti Initiative). The EC discussed the potential need to make our support of such activities more transparent and possibly put out a call for others to know that they can request these kinds of support. In light of our discussion about the Division finances, EC members were hesitant to make any formal commitment. This issue will be revisited at the August meeting when we have a better perspective on our financial future.

Meece reported that she was contacted by the Educational Directorate of APA about the formation of a new collation what will focus on high achievement, as well as the opportunity for Division 15 to be a "founding member" of this coalition. The invitation was sent to the Executive Committee members prior to this meeting and there was no strong interest by the Executive Committee. Meece asked if that was still the case. The Executive Committee agreed that, at this time, there did not seem to be much interest in dedicating Division funds and time to supporting a liaison to this coalition; as the initiative develops, we may then choose to send a representative. Meece will follow up with the Rena Subotnik.

Meeting adjourned at 9:36 p.m.

Respectfully Submitted,

Helenrose Fives, Montclair State University

SUMMARIES FROM APA 2013 REPORTS

Membership Committee, Anthony R. Artino: Our membership is growing! Thanks, in part, to our recent free-membership drive, Division 15's total membership has grown by more than 30% over the last year. We currently have 1,610 members – a five-year high! What's more, with the help of Wade George, our Director of Communications, the Division has made impressive strides toward improving communications and, in turn, boosting its membership. In addition, through Wade's hard work, we have created several new services, including an ed psych job board, an ed psych blog on *Psychology Today*, and a robust presence on social media sites such as Facebook, Twitter, Google+, and LinkedIn.

Graduate Student Affairs Committee, Mike Yough & Ellen Usher: After a review of applications, the Graduate Students Affairs Committee selected eight participants for this year's Graduate Student Seminar. Participants attend graduate programs in three countries. Seminar planning and scheduling is on track and nearing completion. We have 18 faculty mentors and 14 panelists who will be working with seminar participants. In other activities, our APAGS Representatives conducted an information-gathering survey with Division 15 graduate students.

Program Committee Report, Jeff Greene and Matt Irvin: The room and catering arrangements for the social hour, Publications Committee meeting, and Executive Committee meeting were finalized. Arrangements to videotape all of the invited addresses were also finalized. Steps have begun to transition Program Committee duties to the Program Co-Chairs for the 2014 conference.

Fellows Committee, Martin Ford: In May of 2013, the Division 15 Fellows Committee unanimously recommended three current APA Fellows for Fellow status in Division 15: Charles Greenwood (University of Kansas), Todd Little (University of Kansas), and Darcia Narvaez (University of Notre Dame). All three were subsequently approved for this status by the Division 15 Executive Committee.

Nominations Committee, Marty Carr: Division 15 is happy to announce that Karen Harris (Mary Emily Warner Professor, Arizona State University) has been elected as President-Elect. Dr. Harris will take over the presidency in 2014. Michele Gill (University of Central Florida) has been elected Treasurer and Heather Davis (North Carolina State) has been elected as Member-at-Large. Both will take office following the APA meeting in August. Finally, Timothy Curby (George Mason University) has been elected to be Division 15's Representative to the APA Council.

Division 15 Conference, Marty Carr: The Division 15 Conference Committee is hard at work putting together the first Division 15 conference. We are in the process of selecting a specific date in October of 2014 and a place for the conference. We are currently looking at Ann Arbor, Michigan and Chapel Hill, North Carolina as potential sites. We will be contacting members shortly to help finalize the four topics that will be the focus of the conference. Division members have already provided important information about potential topics and we will be narrowing these interests to four topics. The conference is being designed so that all attendees participate in some capacity. We plan to include time for working group discussions linked to the four topics. The conference will be an excellent opportunity for Division 15 members with a common interest to get together and discuss research.

Richard E. Snow Award Committee, Andrew Elliot: The selection committee for the Richard E. Snow Award for Early Career Contributions to Educational Psychology selected its recommended recipient for the 2014 award: Dr. Kou Murayama (this recommendation was approved by the Executive Committee). The 2013 recipient of the Snow Award, Dr. Akane Zusho, will give an address and will receive the award at the upcoming APA convention in Hawaii; Dr. Tim Urdan will present the award to Dr. Zusho.

Dissertation Awards Committee, Martin Jones: This is the seventh year of the Dissertation Research Award program for Division 15, which is designed to provide monetary support to students who are working on their dissertation. Currently, each winner receives \$1,000 for their dissertation work. This year, there were two clear winners based upon the committee's ratings: Loren Marulis (University of Michigan) and Ninger Zhou (Purdue University).