

APA



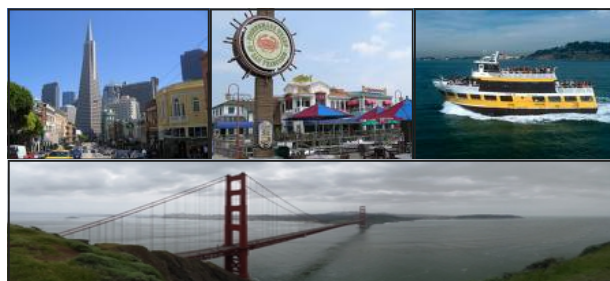
NEP 15

NEWSLETTER FOR EDUCATIONAL PSYCHOLOGISTS

June 2007 :: Volume 30 :: Number 2

APA Convention 2007

August 17 - 20 San Francisco



Things to look for at the
APA Convention

*Symposia, Posters, Socials,
Meetings and Awards*

Invited Addresses:

Institute of Education Sciences at Five
Years of Age / Presenter: Grover Whitehurst

2006 Richard E. Snow Award for Early Con-
tributions to Educational Psychology: When
are Students Motivated and Why? A Long
Detour and Back to Where the Question
Started / Award Winner: Mimi Bong

2007 E.L. Thorndike Award for Career
Achievement in Educational Psychology
Award Winner: Jere Brophy

2006 Paul R. Pintrich Outstanding Disserta-
tion Award: The Book Was Better Than the
Movie - Using Video in Contrasting-Cases
Activities / Award Winner: Brian Beitzel.
Presenter: Sharon Derry

Table of Contents

Note from Editor.....	2
Division 15 Needs Your Help.....	2
Officers of Division 15.....	2
Convention Program: Division 15 Sessions...	3-5
Minutes: APA Div 15 Executive Committee.... (April 9, 2007, Chicago, AERA conference)	6-9
Call for Division 15 Fellow Applications.....	9

Note from the Editor


The *Division 15 Newsletter* has a new look and we hope you like it! My thanks to Florian Haerle (Assistant to Editor), Lyn Corno (*Division 15* President), and Ellen Mandinach (Program Chair) for their hard work and feed-

back on the new format.

If you have any comments please let us know. From the looks of the scheduled *Division 15* sessions, the upcoming APA Convention will be an interesting one (see p. 3). Congratulations to all of this year's award winners. If you are attending the conference, I hope you have an enjoyable and productive week in San

Division 15 Needs Your Help!

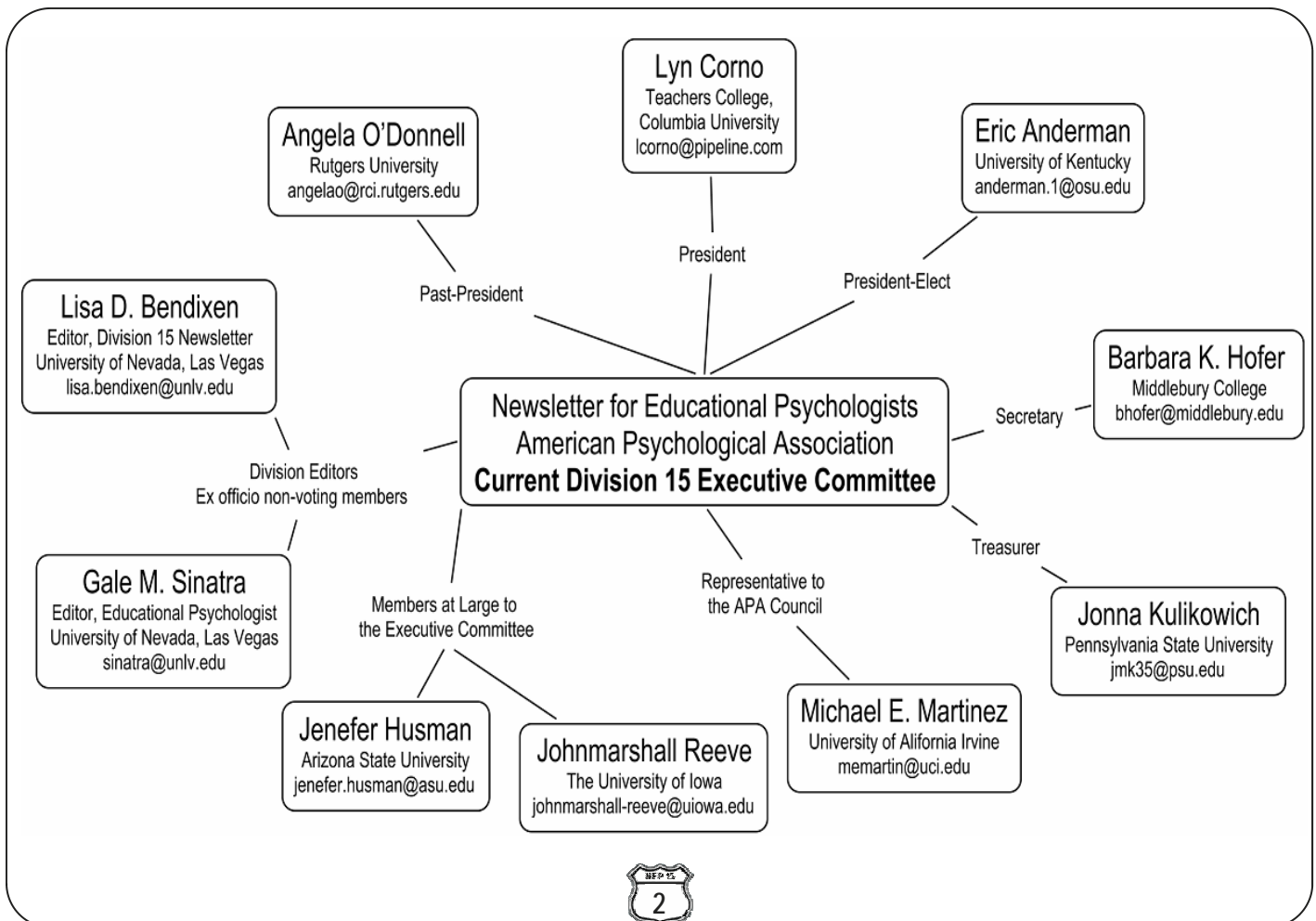
The *Nominations Committee* is requesting nominations for the following *elected* executive committee positions to begin in 2009:


President
Secretary
Member-at-Large
Council Representative

Please contact Lyn Corno (lcorno@pipeline.com), incoming *Nominations Committee Chair*, if you would like to make a nomination.

In addition.

If you are interested in serving in an appointed position starting in 2008 for any division committees, please write to Eric Anderman (anderman.1@osu.edu), incoming *Division 15 President*, with a statement of interest.



Convention Program Division 15 Sessions

Ellen Mandinach, Program Committee Chair

Friday 8/17

Invited Address

Institute of Education Sciences at Five Years of Age

Time: 8/17 Fri: 10:00 AM - 10:50 AM

Location: Moscone Center, Room 2002

Chair: Ellen Mandinach, PhD

Participant/1stAuthor: Grover Russ Whitehurst, PhD

Invited Address

2006 Richard E. Snow Award for Early Contributions to Educational Psychology: When are Students Motivated and Why? A Long Detour and Back to Where the Question Started

Time: 8/17 Fri: 12:00 PM - 12:50 PM

Location: Moscone Center, Room 2010

Chair: Paul Schutz, PhD

Award Winner: Mimi Bong, PhD

Symposium

Challenges for Cognitively Based Assessments for Learning

Time: 8/17 Fri: 2:00 PM - 3:50 PM

Location: Moscone Center, Room 3004

Co-chairs: Malcolm I. Bauer, PhD & Mary Pitoniak, PhD

Participant/1stAuthor(s): Auroa Graf, PhD; Kathy Sheehan, PhD; Thomas Quinlan, PhD

Discussant: Mark Wison, PhD



Saturday 8/18

Conversation Hour

Graduate Student Breakfast with Past Presidents

Time: 8/18 Sat: 7:00 AM - 7:50 AM

Location: San Francisco Marriott Hotel, Yerba Buena Salons 5 and 6

Co-chairs: Michelle M. Buehl, PhD & Helenrose Fives, PhD

Invited Address

2007 E.L. Thorndike Award for Career Achievement in Educational Psychology

Time: 8/18 Sat: 8:00 AM - 8:50 AM

Room: Moscone Center, Room 2022

Chair: Thomas Good, PhD

Award Winner: Jere Brophy, PhD



Poster Session

Psychological Constructs

Time: 8/18 Sat: 1:00 PM - 1:50 PM

Location: Moscone Center, Halls ABC

Participant/1stAuthor(s): Shu-Shen Shih, PhD; Yuanming Yao, PhD; Ivar Braten, PhD; Evelyn S. Chiang, MA; Krista R. Muis, PhD; Gita Taasobshirazi, MA; Christopher O. Walker, PhD; Thomas G. Reio, Jr., PhD; Jessi L. Smith, PhD; Hiroshi Maeda, PhD; Keisha M. Love, PhD; Tierra M. Freeman, PhD; Richard E. Morehouse, PhD; Timothy A. Hanchon, PhD; Lindsey L. Krawchuk, BA; Kristi L. Cordell-McNulty, MS; Allison D. Kates, BA; Sujin Lee, PhD; Jacob M. Marszalek, PhD; Myoungsook Kim, PhD, MA; Taylar Clements, Med; Lindsey E. Felix, BA; Gail M. Ferguson, PhD; Michelle M. Buehl, PhD; M.H. Clark, PhD

Symposium

Assessing and Developing Non-Cognitive Factors in Education

Time: 8/18 Sat: 2:00 PM - 3:50 PM

Location: Moscone Center, Room 3002

Chair: Patrick C. Kyllonen, PhD

Participant/1stAuthor: Richard D. Roberts, PhD; Linda Jarvin, PhD; Kimberly Kendziora, PhD; Patrick C. Kyllonen, PhD

Discussant: Mary McCaslin, PhD

Paper Session

Measurement Scales and Simulations - Assessing Cognitive and Non-Cognitive Components

Time: 8/18 Sat: 4:00 PM - 4:50 PM

Location: Moscone Center, Room 224

Chair: Barbara K. Hofer, PhD

Participant/1stAuthor(s): Myunghee J. Kang, PhD; Jacob

M. Marszalek, PhD; Hunter Gehlbach, PhD

Committee Meeting: Publications

Time: 8/18 Sat: 6:00 PM - 6:50 PM

Location: San Francisco Marriott Hotel, Sierra Conference Suite G

Chair: Gary Phye, PhD

Executive Committee Meeting

Time: 8/18 Sat: 7:00 PM - 8:50 PM

Location: San Francisco Marriott Hotel, Sierra Conference Suite G

Chair: Lyn Corno, PhD

Sunday 8/19

Conversation Hour

Graduate Student Breakfast With Thorndike Career Award Winner

Time: 8/19 Sun: 7:00 AM - 7:50 AM

Location: San Francisco Marriott Hotel, Sierra Conference Suite J

Co-chairs: Helenrose Fives, PhD & Michelle M. Buehl, PhD

Paper Session

Non-Cognitive Factors That Influence Academic Performance

Time: 8/19 Sun: 8:00 AM - 8:50 AM

Location: Moscone Center, Room 212

Chair: Malcolm I. Bauer, PhD

Participant/1stAuthor(s): Jihyun Lee, PhD; Natalie Fischer, PhD; Bobby H. Hoffman, PhD

Symposium

School Reform Matters

Time: 8/19 Sun: 9:00 AM - 10:50 AM

Location: Moscone Center, Room 3004

Chair: Mary McCaslin, PhD

Participant/1stAuthor(s): Mary McCaslin, PhD; Thomas Good, PhD; Caroline R.H. Wiley, MA; Amanda R. Bozack, MA; Alyson Lavigne Dolan, MA; Ida Rose Florez, MA; Mary McCaslin, PhD; Heidi Burross, PhD; Thomas Good, PhD

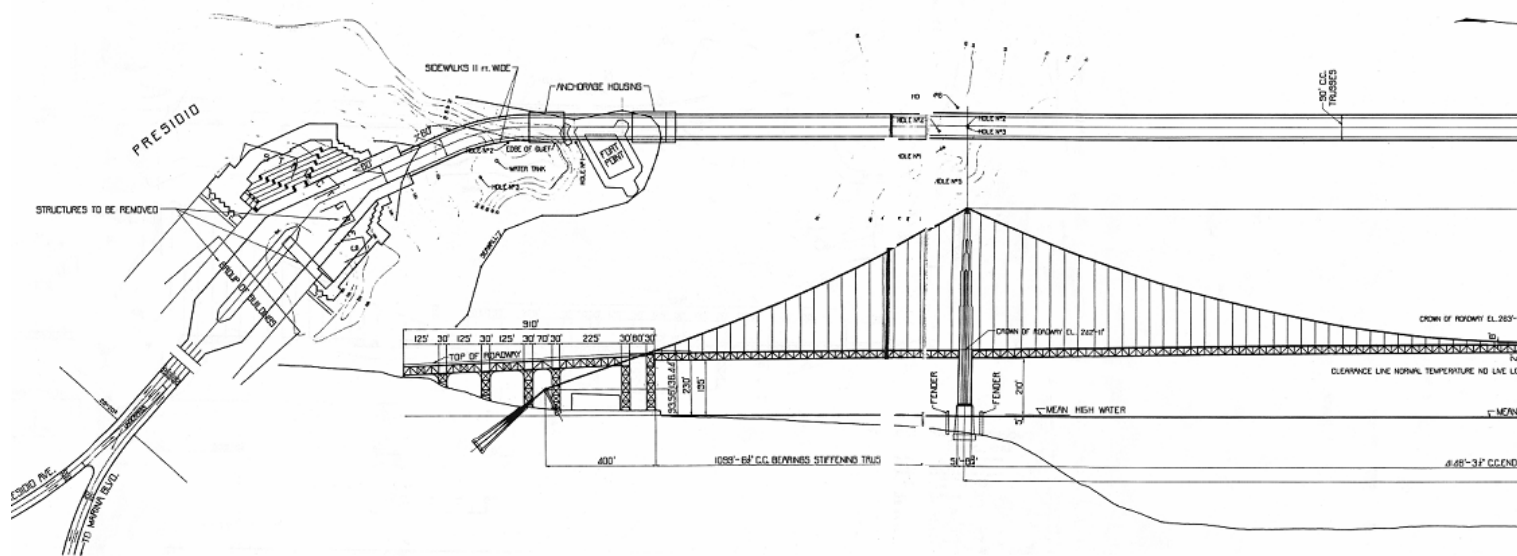
Poster Session

Classrooms, Teachers, and Instruction

Time: 8/19 Sun: 11:00 AM - 11:50 AM

Location: Moscone Center, Halls ABC

Participant/1stAuthor(s): Keith D. Ciani, Med; Krista R. Muis, PhD; Lynda De Leon, EdD; Michael J. Foy, MA; Gonul Sakiz, MA; Tomoyuki Yasuda, PhD; William H. Huffman, PhD; Elizabeth S. Hartmann, Med; Lauren P. Fell; Dionne I. Cross, MA; Erika M. Gold, BA; Douglas H. Wallace, PhD; Aubrie E. Swan, BA; Jannon C. Farkis, MS; Angela M. O'Donnell, PhD; Shauna B. Wilson, BS; Mary A. Duggan, Med; Mike McKee, BS; Evelyn S. Chiang, MA; Catherine Roux, MA; Jill H. Lohmeier, PhD; Rebecca R. Robichaux, PhD; Jane E. Pizzolato, PhD; Dyana E. Murrell, BS; Stephanie B. Corliss, PhD, MA; Ching-Mei Tseng, MS; Christa S. Lynch, Med; James P. Van Haneghan, PhD; Nicole DiDonato, BS; Andrea Zevenbergen, PhD; Ida Jeltova, PhD



Invited Address

2206 Paul R. Pintrich Outstanding Dissertation Award: The Book Was Better Than the Movie - Using Video in Contrasting-Cases Activities

Time: 8/19 Sun: 1:00 PM - 1:50 PM

Location: Moscone Center, Room 2001

Chair: Michele G. Gill, PhD

Presenter: Sharon Derry

Award Winner: Brian Beitzel

Business Meeting

Time: 8/19 Sun: 5:00 PM - 5:50 PM

Location: San Francisco Marriott Hotel, Nob Hill Rooms A and B

Chair: Lyn Corno, PhD

Presidential Address

On Teaching Adaptively

Time: 8/19 Sun: 6:00 PM - 6:50 PM

Location: San Francisco Marriott Hotel, Nob Hill Rooms A and B

Chair: Angela M. O'Donnell, PhD

Participant/1stAuthor: Lyn Corno, PhD

Fun

Social Hour

Time: 8/19 Sun: 7:00 PM - 7:50 PM

Location: San Francisco Marriott Hotel, Nob Hill Rooms C and D

Monday 8/20

Symposium (S): Roles of Emotion Regulation and Reactivity in Children's School Adjustment in the United States and China

Time: 8/20 Mon: 9:00 AM - 9:50 AM

Location: Moscone Center, Room 2008

Co-chairs: Qing Zhou, PhD & Jeffrey Liew, PhD

Participant/1stAuthor (s): Jeffrey Liew, PhD; Amanda Sheffield Morris, PhD; Qing Zhou, PhD

Discussant: Ross Thompson, PhD

Paper Session (S): Cognitive and Non-Cognitive Factors Related to Academic Performance

Time: 8/20 Mon: 11:00 AM - 11:50 AM

Location: Moscone Center, Rooms 228 and 230

Chair: Patrick C. Kyllonen, PhD

Participant/1stAuthor(s): Matthew A. Easter, MA; Anne B. Swanberg, MEd, MBA; Katherine B. Bevans, PhD

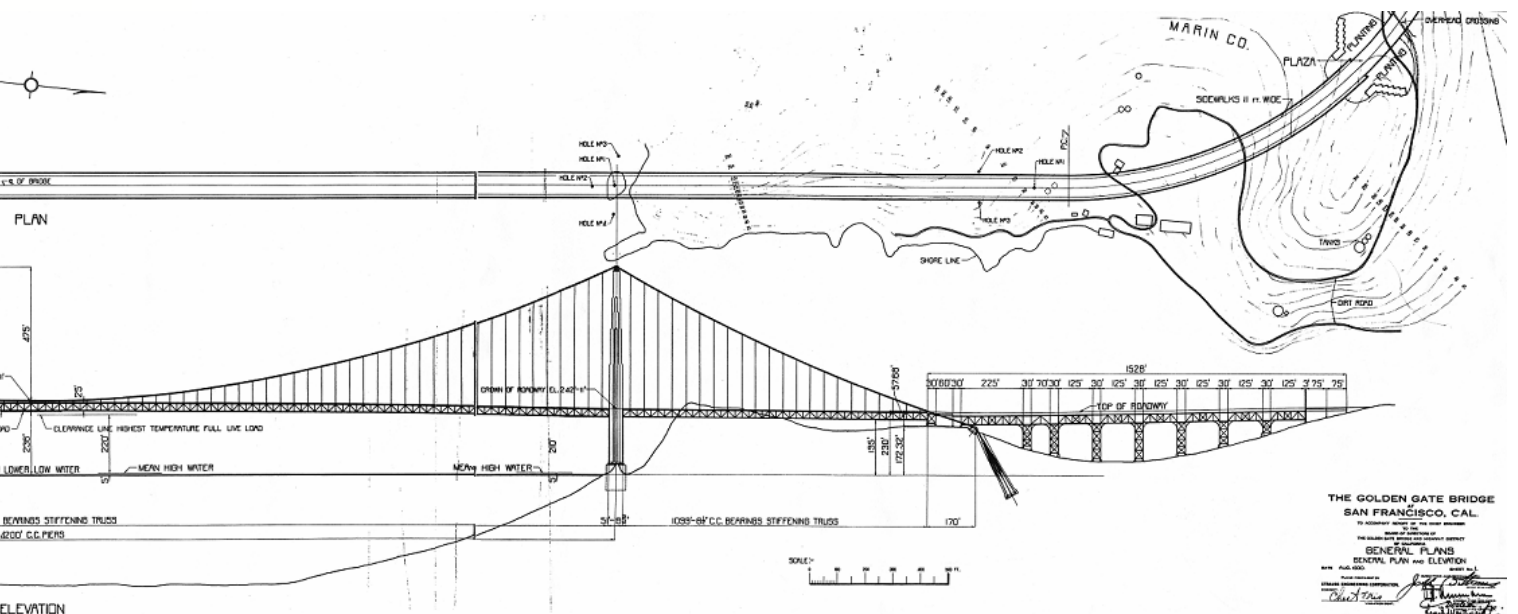
Future APA Convention Sites

2008

Boston, Massachusetts
August 14-17 (Thursday - Sunday)

2009

Toronto, Ontario, Canada
August 6-9 (Thursday - Sunday)



THE GOLDEN GATE BRIDGE
SAN FRANCISCO, CAL.
GENERAL PLANS
GENERAL PLAN AND ELEVATION
SCALE: 1" = 100'

MINUTES

APA Division 15 Executive Committee

April 9, 2007

Chicago (AERA conference)

Executive Committee members present: Lyn Corno (president), Eric Anderman (president elect), Angela O'Donnell (past president), Jonna Kulikowich (treasurer), Barbara Hofer (secretary), Jenefer Husman (member at large), Johnmarshall Reeve (member at large)

Also present: Ellen Mandinach (program chair, 2006), Rayne Sperling (Historian), Gary Phye (chair, Publications committee), Michelle Buehl (co-chair, Graduate Affairs committee), Helenrose Fives (co-chair, Graduate Affairs committee), Michele Gregoire Gill (chair, Paul R. Pintrich Dissertation Award Committee), Gale Sinatra (editor of *Educational Psychologist*), Karen Murphy (incoming chair, Membership), Jessica Summers (representative to Board of Educational Affairs), Michael Martinez (APA Council representative), Ralph Reynolds (member, Publications Committee).

The executive committee began with approval of the minutes from the November board retreat. Reports from APA liaisons followed. Jessica Summers reported that she had attended the APA Board of Educational Affairs and that she had met with the Director for the Center for Psychology in Schools and Education (a project of the board), Rena Subotnik, who is interested in ideas for projects of mutual interest. Summers shared a list of potential initiatives, including a possible website to debunk persistent myths in educational psychology (e.g., self esteem and underachievers, learning styles) and teaching teachers how to motivate by understanding basic principles of education. After discussion by the board, Corno suggested that Summers get additional information, particularly on the motivation initiative.

Michael Martinez reported on the APA Council of Representatives meeting that he attended in February. APA has never had a strategic plan and they decided to establish a 5-year plan. The Council evaluated the CEO and renewed a 5-year contract, voted to separate the Canadian Psychological Association from APA in the accreditation process (so that Canadian programs will now get accreditation through CPA), and passed a pol-

icy on rejecting the teaching of intelligent design in the schools. Discussion ensued over whether APA should be taking a stance on issues such as the latter one. The Council also approved a resolution opposing legislation and initiatives aimed at discriminating against gays and lesbians, accepted a task force report on the sexualization of girls, approved a budget, and approved funding for several small projects on focal initiatives.

No reports, either written or oral, were provided for the Board of Scientific Affairs, the Coalition for Psychology in the Schools and Education, or the Committee on International Relations.

Committee reports followed, beginning with the Publications Committee. Lawrence Erlbaum Associates, publisher of *Educational Psychologist* for the past 25 years, has been sold to Taylor and Francis, and the Publications Committee and Executive Committee decided that this was a good opportunity to seek competitive bids. Members of the Publications Committee have read 5 pre-proposals from several presses and Phye, as chair of the committee, will be issuing a formal request for proposals this month, with proposals due back in June. Larry Erlbaum has been retained as a consultant to advise in the process of selecting a new publisher. The Publications Committee will make recommendations to the Executive Committee, who will make the decision regarding choice of the publisher. The current president, incoming president, and publications committee chair will be involved in negotiations with the new publisher. The group discussed the potential this has for both improving the visibility and impact of the journal as well as the financial return for the division.

In further publication business, Phye reported that the committee also agreed upon procedures for selection of the EP editor; this proposal will be circulated by email to the executive committee. When it is ratified, Rayne Sperling, division Historian, will put the new policy into the policies and procedures manual. Phye also reported that the contract with Corwin for the Psychology in the Schools series was completed this past year.

Gale Sinatra provided a report on *Educational Psychologist*, noting that submissions were up 81% in 2006, compared to 2005. The editorial board has expanded to include more international members, and the number of unique reviewers (board members and ad hoc reviewers) has doubled. The rejection rate for new submissions in 2006 was 83%.

Lisa Bendixen (not present) filed a written report for the division newsletter, noting the publication timeline as October, February, and June. This provides opportunities to promote conference activities in advance and solicit a call for nominations in a timely manner. Corno announced that she had put Bendixen in touch with Neil Schwartz, editor of AERA Division C newsletter to discuss potential format changes.

In the final issue regarding publications, members suggested to the chair that in addition to these reports it would also like to hear from Barbara McCombs at each of these meetings, with an update on the Psychology in the Schools Series, another set of division publications.

Marty Carr (not present) filed a written report for the Fellows Committee. Five members have been approved by the committee and are awaiting APA decision. The committee also solicited nominations from APA Fellows and received 22 nominations and is currently considering those.

Reports from awards committees followed. Michele Gill reported that the 2007 winner of the Paul R. Pintrich Dissertation Award, Brian Beitzel, is unable to present this year, but his dissertation adviser, Sharon Derry, will present for him. The committee received rated and ranked nominees for the 2008 award, and chose Lynette Arnold. Corno expressed concern that funding for this award was low and traveling to the conference is expensive, especially for graduate students, and Karen Murphy stated that the amount has not been raised in many years and perhaps should be higher or include travel. Jonna Kulikowich commented that it was easier for financial accounting purposes to raise the overall award amount, rather than allotting travel funds separately. Hofer moved to double the award to \$1000 and the motion was seconded. O'Donnell objected, noting that the board should not be making ad hoc decisions such as this in the absence of a financial plan. Reynolds and Anderman noted the need for strategic planning for the division, and Anderman reminded the group that he had agreed at the retreat to create a budget template for planning purposes that will allow the Executive Committee to prioritize. The recommendation of Arnold as the recipient of the 2008 award was approved. The award committee recommends online submissions for next year and the board concurred. Gill has also agreed to assume responsibilities for chairing the new Dissertation Research Grants Committee and deadlines for submission are May 1.

Corno reported on the Thorndike award, in the absence of chair David Berliner. The committee has selected Jere Brophy, who will present at the August 2007 conference. Paul Schutz (not present), chair of the Snow award committee, submitted a written report describing this year's process and nominating Carol Connor for this award. Members of the Executive Committee expressed concern about the low number of nominees this year and encouraged the committee to be more active in its solicitations of nominations, particularly among the membership. There was discussion about whether the nominees for Division 15 awards should be members of the division prior to their nomination and whether nominating someone who was not was in violation of the bylaws.

Ellen Mandinach, chair of the 2007 Program Committee presented the preliminary program. She received 126 submissions and expressed concern about the level of some of them and the need to improve the standards for submissions. She will write up suggestions for next year's chair. She also has a list of reviewers to forward. She noted the difficulty of sending reviews back, given that the APA online system does not facilitate this and it must be done manually. Karen Murphy noted that she had done this as program chair. Sperling suggested that providing the peer reviews helps raise the perception of the scholarly process involved and may help raise standards for submissions, and the board concurred. Several people commented that it is important to have an online system facilitate this and that the chair should raise this concern with APA once again. The system appears designed for APA to create the program but does not aid program chairs of divisions.

Continued on next page!

Encourage Your Colleagues and Students to Join Division 15 of APA

Membership benefits include:

- ◆ Free subscription to *Educational Psychologist*
- ◆ Free subscription to NEP 15
- ◆ Discounts on some Division 15 sponsored publications
- ◆ Collegueship with a worldwide network of educational psychologists

See back cover for more information

Helenrose Fives and Michelle Buehl reported as co-chairs of the Committee on Graduate Affairs. The deadline for applicants for the 2007 graduate seminar was March 19, but they had only 5 applications by then. They are issuing a second call on the division listserv and the motivation listserv. They also made an announcement at the graduate seminar. They reported being satisfied with the schedule that has been arranged for the meeting and the coordination with the division program.

Angela O'Donnell, chair of the Nominations Committee, reported that she had difficulty finding people willing to serve. Ellen Mandinach and Arthur Graesser are candidates for president. She reported that Graesser has agreed to become a member of the division. Discussion ensued about recruiting nominees from within the membership. Anastasia Kitsantas, JohnMarshall Reeve, and Chris Wolters are candidates for treasurer. Michelle Buehl and Nancy Perry have been nominated for member-at-large.

Corno reported on the creation of a separate Membership committee and announced that Karen Murphy has agreed to assume the role of chair beginning August 2007. Membership was previously part of the function of the Fellows committee, but this aspect of the work had gotten lost. Corno will serve on the new committee after her presidency ends, and is seeking two other members. Corno also recently wrote a letter that is now sent to new members when they join. She stated the importance and need for a membership brochure.

Join the Division 15 Listserv!

Send a message to listserv@lists.apa.org. In the body of the note type the following: subscribe div15 firstname lastname substituting your own first and last names instead of those words. Do not include anything else in the note, and do not put anything in the subject line.

Alternatively, you can send a note to Keith Cooke at kcooke@apa.org asking to be added to the Division 15 listserv.

Any questions can also be directed to Keith Cooke, (202) 216-7602 American Psychological Association Division of Member Services.

Jonna Kulikowich provided the treasurers' report in accordance with the bylaws, which state that the treasurer is expected to provide a profile of the last five years. Division income is primarily from *Educational Psychologist* and the Classroom in the School series; no royalties have yet been received from the second edition of the *Handbook of Educational Psychology*. Kulikowich stated that the division is moving toward allowing the APA accountants to handle more of our paperwork, as decided at the retreat in November. They will receive receipts W-9s, etc., work that has been time consuming for the treasurer. Either the treasurer or president will still need to sign off on all expenses, but she reports that this support from APA is likely to reduce the time of the treasurer by at least half.

Kulikowich noted that expenses seem to be relatively standard from year to year. Funding set aside for the conference, however, may be too low, as costs have risen, and she suggested raising the amount allocated from \$10,000 to \$12,000. A motion to that effect was seconded and approved.

Johnmarshall Reeve asked the treasurer about the amount of cash on hand and the group returned to a discussion from the retreat of how the funds should be allocated between checking and the Vanguard account. Following the decision made at that time, the treasurer will place twice the annual budget in the checking account and move the remainder to the Vanguard account; she reported that APA is waiting until this year's taxes are completed to make that move. Phye noted that the change in publishers for *Educational Psychologist* brings the opportunity for increased revenue and makes a financial plan even more important.

The final report was from the division Historian, Rayne Sperling, who began the position in August. She discussed ideas for a possible plan for the new web site design and offered to bring to the August meeting a list of possible documents to put on the web site, which currently has very few. She also wants to establish a communication flow so that more documents can be archived, and she offered ideas for the newsletter that would increase interest in the division's history. Sperling requested funds for her and a graduate student to travel to the APA archives in Washington, which was approved. She offered to work with president-elect Anderman to develop a budget for the historian.

Corno advanced the agenda to old business. The first item was the bylaw changes that need to be proposed to

the membership for ratification, as discussed at the August 2006 meeting and agreed upon in November, including the move to a two-year presidency. In addition the group had agreed upon a number of other changes that will bring the organization into conformity with the bylaws. O'Donnell, who as past president is responsible for bylaw changes, reported that it had been too late to get this to a membership vote this year so she would circulate language to the board in August, with proposals to go before the membership in the fall.

Another item at the November retreat had been the idea for an APA pre-conference workshop on methodology. Kulikowich reported that this was nearly ready for 2008, with three sessions arranged on IRT, SEM, HLM, all on applied issues. Division 5 (Measurement) may wish to co-sponsor. Issues of costs and program remain. O'Donnell suggested that participants bring their own computers in order to minimize costs and room

scheduling issues. The Division will need to consider how to publicize this new offering.

Anderman reported on another initiative discussed at the retreat. The last conference on the teaching of educational psychology was in 1996 and Division 15 is now planning to sponsor another one in June 2008. More information will be available in August.

New business, which included the timing of division awards, was tabled until August.

The board thanked Ellen Mandinach for all her work on the program and for the timeliness of her communication with those who submitted proposals.

Respectfully submitted,
Barbara Hofer, Secretary

Call for Division 15 Fellow Applications

Division 15 invites members to apply for Fellow status in the American Psychological Association.

Eligibility:

Elections to Fellow status require evidence of unusual and outstanding contributions or performance in the field of psychology. Fellow status requires that a person's work have had a national impact on the field of psychology and beyond a local, state, or regional level. A high level of competence or steady and continuing contributions are not sufficient to warrant Fellow status. National impact **MUST** be demonstrated.

Requirements:

- Vitae
- Uniform Fellow Application
- Fellow Standard Evaluation Forms (endorsements requested from current fellows)
- Supportive documentation from other sponsoring division(s) (optional)
- Self-statement (optional)

For further information and/or to request forms, please contact: Martha Carr, Educational Psychology and Instructional Technology, 329 B Aderhold Hall University of Georgia, Athens, GA 30605, or mmcarr@uga.edu

American Psychological Association :: Division 15 :: Educational Psychology

APA NEP 15

NEWSLETTER FOR EDUCATIONAL PSYCHOLOGISTS

Lisa D. Bendixen, **NEP 15 Editor**, and Florian C. Haerle, Assistant to Editor, University of Nevada, Las Vegas.

NEP 15 is the official newsletter of Division 15 - Educational Psychology - and has a Spring, Summer, and Fall/Winter issue each year. It is mailed from the US Post Office in Washington, DC 20002-4242. Mailing addresses are those listed on the official APA roster. Corrections and changes of address should be sent directly to the APA Directory Office, 750 First St., NE, Washington, DC 20002-4242.

NEP 15 will publish minutes of official business meetings, committee reports, news items, and information on topics and issues of interest to the Division 15 membership. Items and articles for **NEP 15** should be sent to Lisa D. Bendixen, via email Lisa.Bendixen@unlv.edu.

NEEP 15

NEWSLETTER FOR EDUCATIONAL PSYCHOLOGISTS
DIVISION 15 / AMERICAN PSYCHOLOGICAL ASSOCIATION
750 FIRST STREET N.E., WASHINGTON, D.C. 20002-4242

Application for 1-Year Membership in APA Division 15: Educational Psychology

Name: _____

Institution: _____

Mailing address: _____

E-mail address: _____

Phone number () _____

† APA Dues-Paid Member \$9.00
(APA ID# _____)

† Non-APA Member \$25.00
(affiliate of the Division only)

† Student Member \$10.00
(include proof of student status)

Send completed application and membership fee to
(Make checks payable to *DIVISION 15-APA*):

Mr. Keith Cooke
American Psychological Association
Division of Member Services
750 First Street, NE
Washington, DC 20002-4242

FIRST CLASS MAIL
US POSTAGE
PAID
WASHINGTON, DC
PERMIT #6348